

# Stainless Steel Timber Screws

A Decking Screw that works.

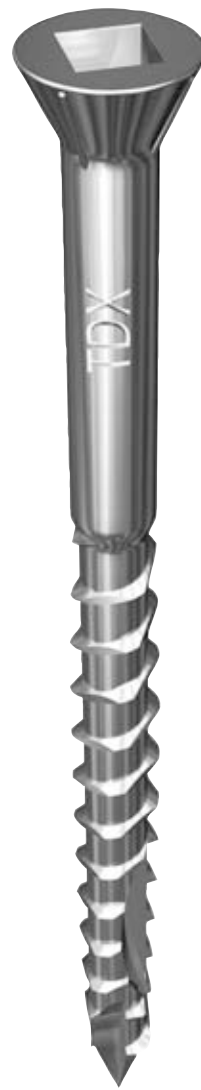
Hobson Engineering have developed a timber decking screw that works. The TDX screw is a new design that enables a combination of the features that most of us want in a screw.

These features include; 304/A2 stainless steel for corrosion resistance; a special point, cut and thread so that pre-drilling is not required into most hardwood to save time and money; a trim head for a neat finish; a No.1 square drive so the bit will not slip and a new type of square thread for greater holding power which prevents the decking from lifting.

## Features

- ✓ **304/A2 Stainless Steel - Corrosion resistant**
- ✓ **No.1 Square Drive Trim Head - Great grip and neat finish.**
- ✓ **Type 17 point , double cut - Self drilling, saves time.**
- ✓ **Countersunk 4 rib trim head - Self embedding**
- ✓ **Square thread - Self drilling and excellent holding power**
- ✓ **Direct into Hardwood. (some hardwood may require pre-drilling).**
- ✓ **2 sizes available. 55mm & 65mm long**

# TDX™



## Hobson Stainless Screws

**Hobson Stainless Timber Screws come with a Needle Point or Type 17 point type.**

### Type 17



Designed to pierce and self drill sheet metal and drill timber supports, cutting out the hole whilst driving.

### Needle Point



Used to pierce light gauge sheet metals or chipboard for self taper type applications without having to drill. Very often used in construction of steel framed housing to secure plasterboard.

**Hobson Stainless Timber Screws come with a Square type drive to avoid the “cam-out” (driver bit slip-out) which is associated with the Phillips type drive. More torque can be applied to the Square type drive screw so you can drive it all the way.**



create

Since 1935  
... because quality matters